



Practicality and Versatility

Metro's versatile RTR-50, designed for heavy duty, reaches the perfect balance between size and capacity. With the 360° continuous motion and the sliding option this unit can reach and lift in any situation you will encounter.
 Unit weight without chassis: 20,700 kg (45,600 lbs)

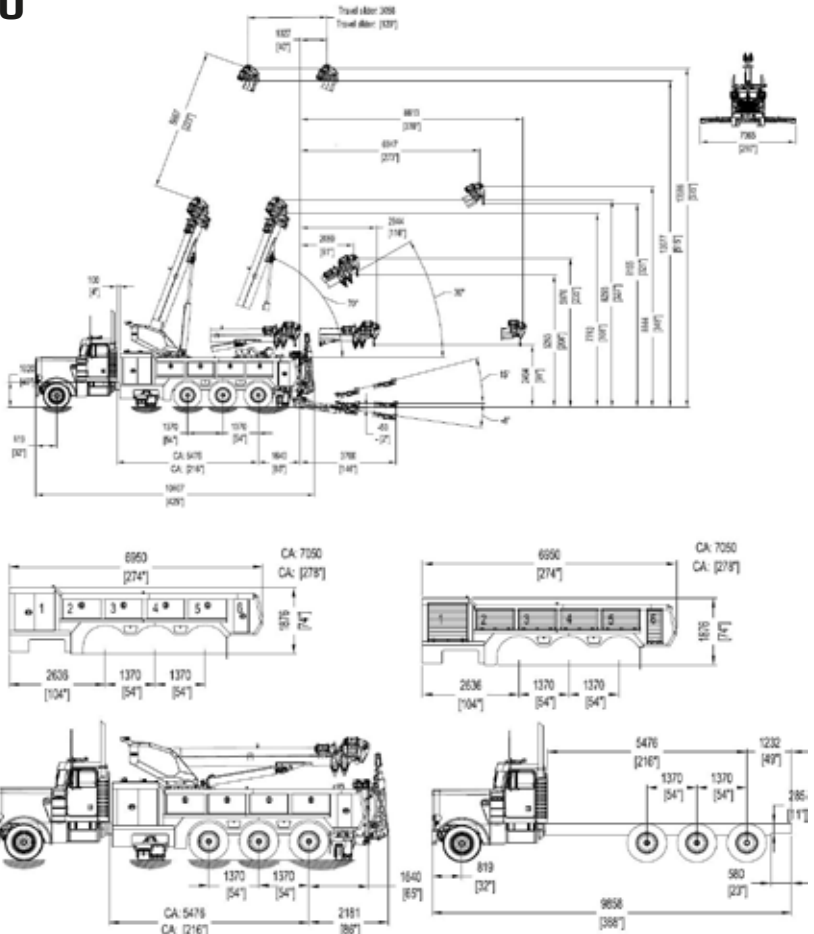
Standard features

- 5476 mm (216") Cab to centre of tandem standard steel body
- 2 x 25 ton (55,000 lbs) winches
- 1 set of frame fork holders and 4 sets of frame forks
- Safety chains
- Frame fork and chain racks
- Chrome door handles
- Driver side manual controls
- Air and 12V/24V outputs
- Non slide configuration

Options

- Complete wireless remote control
- Proportional remote control
- Slide configuration
- 2 additional 20 ton (44,000 lbs) winches
- 609 mm (24"), 762 mm (30"), 914 mm (36"), 1219 mm (48"), 1828 mm (72") tunnel box
- Tailboard controls
- Extra frame forks
- Wheel lift receivers for single/double tire
- Full recovery tool package
- Custom storage system
- Aluminum or composite body
- European body style
- Gravel guard undercoating finish
- Front push bumper
- Front winch and Drag winch
- XP, X-shape side puller
- A-arm style side winches
- Steel core rope
- Chrome hand rails
- In cab controls
- Full size LED light bar and strobe lights
- LED working lights and lights inside the toolbox





NOTE: Axle configuration is subject to local laws and regulations. All information in this document is for reference purposes only. Optional configuration might be shown.

Underlift Specifications / * = Euro Option

Vehicle Recommendations

Retracted capacity on forks	22.5 ton (50,000 lbs) / * same
Retracted distance to the forks	1844 mm (73") / * same
Extended capacity on forks	5.6 ton (12,300 lbs) / * same
Extended distance to the forks	3700 mm (146") / * 3811 mm (150")
Negative tilt angle	-8°
Tow Rating (Based on Chassis)	36 ton (80,000 lbs)

Front axle(s) weight (min)	9 ton (20,000 lbs)
Rear axle(s) weight (min)	9 ton (20,000 lbs) + 2 x 10.4 ton (23,000 lbs)
Recommended Tire size	R24.5
Clear CB	5476 mm (216")

Boom Specifications

Winch Specifications

Retracted capacity (at 65°)	50 ton (110,200 lbs)
Extended capacity (at 65°)	12.5 ton (27,550 lbs)
Maximum Lift angle	70°
Maximum Hook Height	13077 mm (515")
Reach Past Tailboard	6947 mm (273") Slider Option

Quantity	2 pcs
Pulling force (on 1st layer)	25 ton (55,000 lbs) & optional 20 ton (44,000 lbs)
Winch type	Planetary
Cable specs	22 mm x 60 m (7/8" x 200') optional 19 mm x 60 m (3/4" x 200')

Notes:

- Information with a star (*) is for our low profile European style under lift specifications
- Some optional equipment may be shown.
- All ratings are based on structural and design factors only. Vehicle chassis capacity and capabilities can vary significantly, affecting the overall performance and rating of the unit. All chassis specifications are minimums, heavier specifications may be required depending on chassis and equipment weights. Please contact your nearest distributor for additional information.

Metro Tow Trucks Co. reserves the right to change, improve or modify products, which may change the specifications, models and feature availability at any time without notice and without obligation. Please contact your nearest distributor for additional information.

© Metro Tow Trucks. All rights reserved. This material may not be reproduced, displayed, modified or distributed without the express prior written permission of the copyright holder. For permission, contact Sales@MetroTowTrucks.com

Metro Tow Trucks

E-mail: Sales@MetroTowTrucks.com

Toll Free (North America): 1-866-924-1675

Direct: +1-613-223-0139

Address: 2759 Lancaster Road,
Ottawa, Ontario, Canada, K1B 4V8