



Easy Heavy Duty Calls

Our INT-35 unit is an everyday heavy wrecker ideal for every job from a tractor trailer to recovery calls. This unit will spend little time in your yard as it will always be grabbing the lucrative calls. It has been designed from the ground up with the operator in mind for towing and recovery calls and to work with loads up to 35 ton (77,000 lbs).

Unit weight without chassis: 8,300 kg (18,300lbs)

Standard features

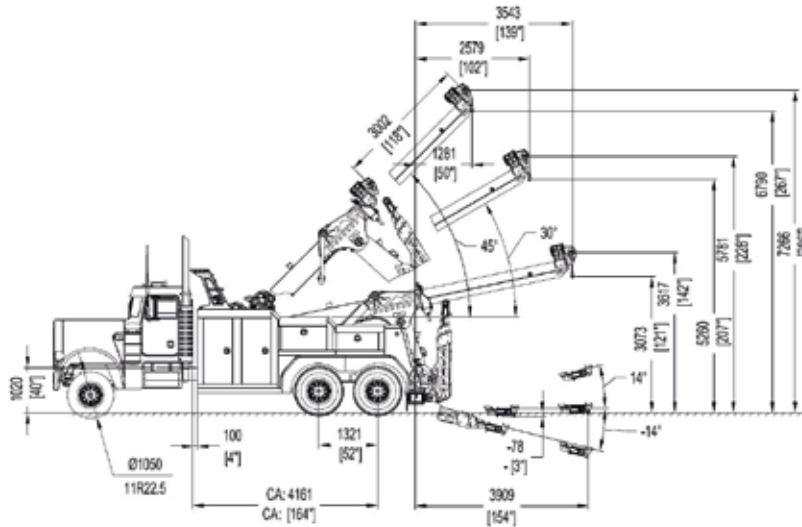
- 4114 mm (162") Cab to centre of tandem steel body
- Two 20 ton (44,000 lbs) winch
- Frame fork holders
- Frame fork racks
- Chain racks
- 4 sets of frame forks
- Chrome door handle
- Driver and passenger side manual controls
- Safety chains



Options

- Wireless remote control
- 20 ton (44,000 lbs) winches
- 609 mm (24"), 762 mm (30"), 914 mm (36"), 1219 mm (48"), 1828 mm (72") tunnel box
- Custom length tunnel box
- Extra frame forks
- Wheel lift receivers for single / double tires
- Full recovery tool package
- Custom storage system
- Aluminum / Composite body
- European body style
- Extendable Rear Legs
- Front push bumper
- XP, X-shape side puller
- Chrome hand rails
- A-arm style side winches
- In cab controls
- European style low under lift
- Full size LED light bar
- LED - working lights, strobe lights, lights inside toolbox
- Installation services and extended warranty
- Tow operators education & training





NOTE: Axle configuration is subject to local laws and regulations. All information in this document is for reference purposes only. Optional configuration might be shown.

Underlift Specifications / * = Euro Option

Retracted capacity on forks	16 ton (35,200 lbs) / * 14 ton (31,000 lbs)
Retracted distance to the forks	2130 mm (84") / * 1701 mm (67")
Extended capacity on forks	8 ton (16,000 lbs) / * 5.4 ton (12,000 lbs)
Extended distance to the forks	3760 mm (148") / * 3657 mm (144")
Negative tilt angle	-10°
Tow Rating	36.2 ton (80,000 lbs)

Boom Specifications

Retracted capacity (at 45°)	35 ton (77,100 lbs)
Extended capacity (at 45°)	15 ton (33,000 lbs)
Maximum Lift angle	45°
Maximum Hook Height	6800 mm (268")
Reach Past Tailboard	2260 mm (89")

Vehicle Recommendations

Front axle(s) weight (min)	6 ton (13,200 lbs)
Rear axle(s) weight (min)	2 x 10.4 ton (2x23,000 lbs)
Recommended GVW (min)	27.5 ton (60,600 lbs)
Clear CB	4830 mm (190")

Winch Specifications

Quantity	2 pcs
Pulling force (on 1st layer)	20 ton (44,000 lbs)
Winch Type	Planetary
Cable Specs	19 mm x 60 m (3/4" x 200')

Notes:

- Information with a star (*) is for our low profile European style under lift specifications
- Some optional equipment may be shown.
- All ratings are based on structural and design factors only. Vehicle chassis capacity and capabilities can vary significantly, affecting the overall performance and rating of the unit. All chassis specifications are minimums, heavier specifications may be required depending on chassis and equipment weights. Please contact your nearest distributor for additional information.

Metro Tow Trucks Co. reserves the right to change, improve or modify products, which may change the specifications, models and feature availability at any time without notice and without obligation. Please contact your nearest distributor for additional information.

© Metro Tow Trucks. All rights reserved. This material may not be reproduced, displayed, modified or distributed without the express prior written permission of the copyright holder. For permission, contact Sales@MetroTowTrucks.com

Metro Tow Trucks

E-mail: Sales@MetroTowTrucks.com

Toll Free (North America): 1-866-924-1675

Direct: +1-613-223-0139

Address: 2759 Lancaster Road,
Ottawa, Ontario, Canada, K1B 4V8